



# SC SERIES

---

## Embroidery Machines



CBL SC Series Embroidery Machine: CBL-1801SC



### **CBL-1201SC**

500X400mm  
Cap embroidery  
Maximum speed 1200SPM



### **CBL-1201SC**

500X400mm  
T-shirt, finished garment embroidery  
Maximum speed 1200SPM



### **CBL-1202SC**

400X400mm  
Cap embroidery  
Maximum speed 1000SPM



### **CBL-1502SC**

400X400mm  
Flatbed embroidery  
Maximum speed 1000SPM



## Division of Models

Model	Needle	Head	Display	Emb. Area	Machine Size	N.W
CBL-1201SC	12	1	10" HD LCD Touch Panel	500X400mm/20" X16"	900 x 800 x 1,600mm 35" x 32 x 63"	140Kgs/309Lbs
CBL-1501SC	15	1	10" HD LCD Touch Panel	500X400mm/20" X16"	900 x 800 x 1,600mm 35" x 32 x 63"	140Kgs/309Lbs
CBL-1801SC	18	1	10" HD LCD Touch Panel	500X400mm/20" X16"	900 x 800 x 1,600mm 35" x 32 x 63"	140Kgs/309Lbs
CBL-1202SC	12	2	10" HD LCD Touch Panel	400X400mm/16" X16"	1200 x 800 x 1,600mm 47" x 32 x 63"	180Kgs/397Lbs
CBL-1502SC	15	2	10" HD LCD Touch Panel	400X400mm/16" X16"	1200 x 800 x 1,600mm 47" x 32 x 63"	180Kgs/397Lbs
CBL-1802SC	18	2	10" HD LCD Touch Panel	400X400mm/16" X16"	1200 x 800 x 1,600mm 47" x 32 x 63"	180Kgs/397Lbs

\* OEM/ODM are welcome.



**Easy Snap-in & Snap-out Switch**

We reserve the rights to change the specifications or design without prior notice. No design or registered trademark of the products contained within this document may be used without prior permission .

## Technical Features

- ✓ Suitable for cap, t-shirt and finished garment embroidery and more
- ✓ Maximum embroidery area: 500 mm x 400 mm, or 20" x 16" (for one head); 400 mm x 400 mm, or 16" x 16" (for two head)
- ✓ Maximum speed: 1,200 spm
- ✓ Maximum cap speed: 1200spm
- ✓ The downsized Slim Cylinder Bed has widened the application range so as to cover tubular products, such as sleeves, pockets, bags and other bulk items.
- ✓ Machine reads multiple design formats, such as DST, DSB, ZSK formats and more
- ✓ 270° wide angle cap system
- ✓ Multiple USB input or direct transmission from PC via LAN port or wireless
- ✓ Networkable and Wi-Fi capable
- ✓ Main shaft motor- Servo motor
- ✓ Stepping closed-loop motor for X & Y axis driving to ensure more exquisite embroidery.
- ✓ Stepping motor color change
- ✓ Stepping motor trimming
- ✓ Stepping motor hooking
- ✓ Stepping motor Jumping
- ✓ Upper-thread holding system
- ✓ Vision camera positioning system available
- ✓ Infrared safety induction system available
- ✓ Heavy duty steel stand with wheels to ensure stability and mobility
- ✓ Reinforced aluminum thread stand to reduce vibration
- ✓ New design for easy installation or dismantle
- ✓ Laser trace device



**Integrated Control System**



**10.1" Touch Panel**

## Display Features

- Dahao 10.1" HD True Color Touch Panel
- Memory capacity: 200 million stitches or 500 designs
- Intelligent and sensitive TB Detection: Wheel plus spring
- 85-265V Self-adaptable power supply
- WIFI connection available
- Multiple hoop sizes for a variety of embroidery needs
- Compact size of Integrated control system
- High-speed closed-loop stepping driving technology
- Preset hoop parameters designed to avoid hitting hoops
- Automatic memory retention
- Signature or photo embroidery are available
- Multiple languages: English, Chinese, Spanish, Portuguese, Turkish, Dutch, French, Germany, Russian, Italian, Thai, Arabic, Farsi



## Machine Highlights

- Main shaft motor-Servo motor
- Closed-loop stepping motor pantograph driving-Less noise and better embroidery work
- Stepping motor color change
- Stepping motor trimming
- Stepping motor hooking
- Stepping motor jumping
- Upper-thread holding system
- Visual camera positioning system available
- Signature/photo embroidery available
- Infrared safety induction system available

## Embroidery Gallery



## Hoops and Cap Attachment



2 pieces of 120mm hoops per head



2 pieces of 180mm hoops per head



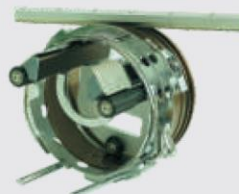
1 piece of hoop station per machine



2 pieces of 240mm hoops per head



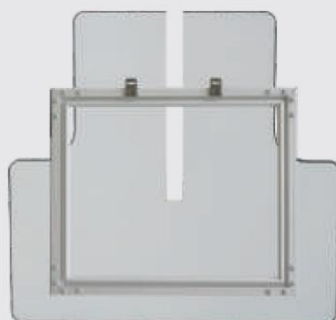
2 pieces of 300\*300mm hoops per head



1 piece of cap driver per head



2 pieces of 480\*340mm hoops per head  
(for single head model only)



Sash Frame& Extended Table



2 pieces of cap rings per head

## Optional Devices



Bead Embroidery



Sequin Embroidery



Cording Embroidery



Laser Embroidery



### J&B Sewing Machine Co Ltd

Curlew Close, Queensway Meadows, Newport. NP19 4SY

Web:- [www.jbsewing.com](http://www.jbsewing.com) email:- [sales@jbsewing.com](mailto:sales@jbsewing.com)

Tel:- +44(0)1633 281555

We reserve the rights to change the specifications or design without prior notice. No design or registered trademark of the products contained within this document may be used without prior permission.